

ECC

window systems



RESIDENTIAL PRODUCTS



ECO 
window systems



Table of Contents

Our Promise	1
-------------------	---

Windows

Single Hung	2
-------------------	---

Horizontal Rollers	4
--------------------------	---

Fixed	6
-------------	---

Casement	8
----------------	---

Doors

French	10
--------------	----

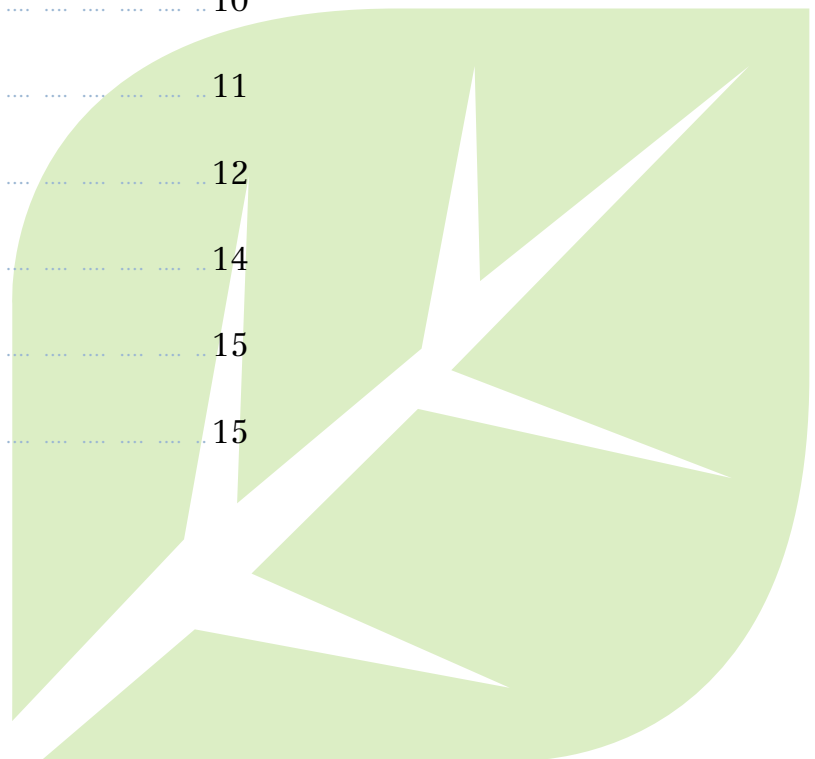
Sliding	11
---------------	----

Outswing	12
----------------	----

Pivot	14
-------------	----

Garage	15
--------------	----

Bifold	15
--------------	----





ECO 
window systems

Our Promise

Eco Window Systems is an Impact-Resistant Window & Door Manufacturer located in Miami, dedicated to delivering superior products & customer satisfaction.

We offer customers a wide selection of impact window & door products, focusing on affordable, reliable and durable impact materials—engineered using the toughest standards in the industry.

We invite you to browse our selection, confident that each of

our products meet Florida's rigorous building codes, ensuring their durability and safety.

We believe our strength lies in both our employees themselves and their commitment to building the best quality impact windows & doors.

Our goal to continuously improve is what drives our success by upholding our commitment to our customers and to our work.



WINDOWS

Single Hung

Aluminum E50
Aluminum E100
Aluminum E150

FRAME COLORS



STANDARD FEATURES

- NFRC certified
- Miami-Dade County approved: large missile impact
- Heavy-gauge aluminum T6 alloy profile
- Clear, Gray, Bronze, Solexia Green, Azuria, Obscure (White Interlayer)
- Stainless steel assembly screws
- Sweep locks
- Double weather-stripping
- Block & tackle balances
- Weep Holes
- Flange Frame



E50

MAXIMUM

FRAME DEPTH: 2"
WIDTH: 44"
HEIGHT: 76"
SIZE: 44" X 76"
DESIGN PRESSURE: +55/-60 psf

ADDITIONAL FEATURES

- 5/16" HS/HS

OPTIONS

- Energy efficient LoE Coatings
- Extruded double-applied 1" colonial muntins
- Egress sash locks



E100

MAXIMUM

FRAME DEPTH: 2 3/4"
 WIDTH:..... 53 1/8"
 HEIGHT: 76"
 (LARGE MISSILE)
 DESIGN PRESSURE: +75/-90 psf

ADDITIONAL FEATURES

- 5/16" HS/HS
- Ultra-lift balances
- Miami-Dade County approved: small missile impact

OPTIONS

- Energy efficient LoE Coatings
- Insulated laminated glass with argon
- Equal leg adapter
- Egress sash locks
- Unequal Vent
- Extruded double-applied 1" colonial muntins



E150

MAXIMUM

FRAME DEPTH: 3 3/8"
 WIDTH:..... 53 1/8"
 HEIGHT: 96"
 (LARGE MISSILE)
 DESIGN PRESSURE: +80/-120 psf

ADDITIONAL FEATURES

- 7/16" HS/HS
- Ultra-lift balances
- Miami-Dade County approved: small missile impact
- Florida product approval: small and large missile

OPTIONS

- Energy efficient LoE Coatings
- Insulated laminated glass with argon
- Equal leg adapter
- Egress sash locks
- Unequal Vent
- Extruded double-applied 1" colonial muntins

WINDOWS

Horizontal Rollers

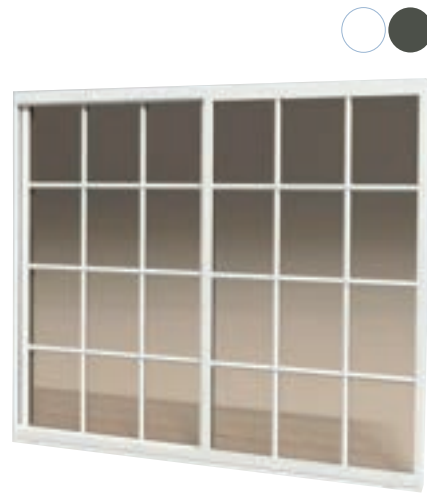
Aluminum E60
Aluminum E200
Aluminum E250

FRAME COLORS



STANDARD FEATURES

- NFRC certified
- Miami-Dade approved: large missile impact
- Heavy-gauge aluminum T6 alloy
- Clear, Gray, Bronze, Solexia Green, Azuria, Obscure (White Interlayer)
- Stainless steel assembly screws
- Sweep locks
- Double weather-stripping
- Extruded aluminum snap-on glazing beads
- Bottom Weep Holes
- Flange Frame



IDEAL FOR LARGE OPENINGS

E60

MAXIMUM

FRAME DEPTH: 2"

WIDTH: 74 1/8"

HEIGHT: 63"

(LARGE MISSILE)

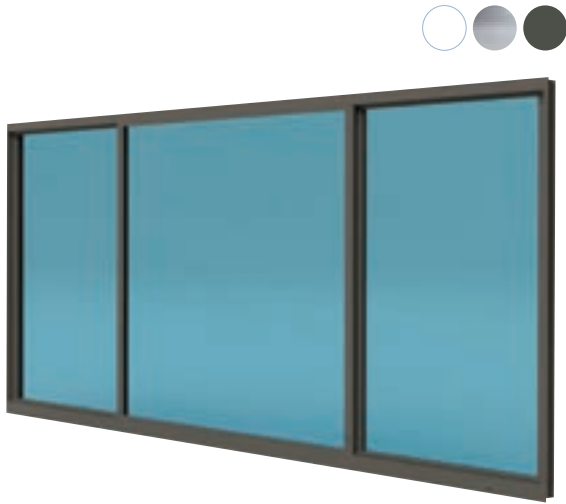
DESIGN PRESSURE: +55/-60 psf

ADDITIONAL FEATURES

- 5/16" HS/HS
- 2-panel configuration (OX/XO)

OPTIONS

- Energy efficient LoE Coatings
- Egress sash locks
- Extruded double-applied 1" colonial muntins



IDEAL FOR LARGE OPENINGS

E200

MAXIMUM

FRAME DEPTH: 2 3/4"
 WIDTH: 111"
 HEIGHT: 63"
 (LARGE MISSILE)
 DESIGN PRESSURE: +80/-90 psf

ADDITIONAL FEATURES

- 5/16" HS/HS
- Miami-Dade County approved: small missile impact
- Stainless-steel rollers
- 2- & 3-Panel configurations

OPTIONS

- Energy efficient LoE Coatings
- Insulated laminated glass with argon
- Equal leg adapter
- Egress sash locks
- Unequal Vent
- Extruded double-applied 1" colonial muntins



E250

MAXIMUM

FRAME DEPTH: 3 3/8"
 WIDTH: 144"
 HEIGHT: 50 5/8"
 (LARGE MISSILE)
 DESIGN PRESSURE: +70/-70 psf

ADDITIONAL FEATURES

- 7/16" HS/HS
- Miami-Dade County approved: small missile impact
- Wide range of styles and sizes including XO,OX, XOX, unequal
- 2- & 3-Panel configurations

OPTIONS

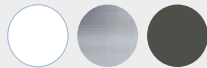
- Energy efficient LoE Coatings
- Insulated laminated glass with argon
- Equal leg adapter
- Extruded double-applied 1" colonial muntins

WINDOWS

Fixed

Aluminum E70
Aluminum E300
Aluminum E350

FRAME COLORS



STANDARD FEATURES

- Florida product approval: large missile impact
- Heavy-gauge aluminum T6 alloy
- Double weather-stripping
- Stainless steel assembly screws



E70

MAXIMUM

FRAME DEPTH: 2 1/8"
SIZE: 32" X 104"
DESIGN PRESSURE: +60/-60 psf

ADDITIONAL FEATURES

- 5/16" HS/HS

OPTIONS

- Energy efficient LoE coatings
- Extruded double-applied 1" colonial muntins
- Architectural shapes

Designer Architectural Shapes



5-SIDED
TRAPEZOID



TRAPEZOID



DOGHOUSE



EYEBROW



GOTHIC



FAN



TRIANGLE



90 TRIANGLE



ELLIPSE



ARC



HEXAGON



OVAL



CIRCLE



HOTDOG



OCTAGON



E300

MAXIMUM

FRAME DEPTH: 2 3/4"
 WIDTH: 36"
 HEIGHT: 120"
 (LARGE MISSILE)
 DESIGN PRESSURE: +80/-90 psf

ADDITIONAL FEATURES

- 7/16" HS/HS
- NFRC certified
- Miami-Dade County approved: large missile & small missile impact
- Concealed fasteners
- Clear, Gray, Bronze, Solexia Green, Azuria, Obscure (White Interlayer)
- Flange frame

OPTIONS

- Equal leg adapter
- Energy efficient LoE coatings
- Extruded double-applied 1" colonial muntins
- Extruded aluminum front applied 2 1/2", 4 1/4" colonial muntins
- Architectural shapes



E350

MAXIMUM

FRAME DEPTH: 3 3/8"
 WIDTH: 54"
 HEIGHT: 120"
 (LARGE MISSILE)
 DESIGN PRESSURE: +75/-105 psf
 (w/SGP)

ADDITIONAL FEATURES

- 7/16" HS/HS
- NFRC certified
- Miami-Dade County approved: large missile & small missile impact
- Concealed fasteners
- Clear, Gray, Bronze, Solexia Green, Azuria, Obscure (White Interlayer)
- Flange frame

OPTIONS

- Equal leg adapter
- Energy efficient LoE coatings
- Extruded double-applied 1" colonial muntins
- Extruded aluminum front applied 2 1/2", 4 1/4" colonial muntins
- Insulated laminated glass with argon
- Architectural shapes

Casement

Outswing Aluminum E500
Fixed Aluminum E550
Project Out Aluminum E560

FRAME COLORS



STANDARD FEATURES

- NFRC certified
- Miami-Dade County approved: large-missile impact tested
- Heavy-gauge aluminum T6 alloy
- Clear, Gray, Bronze, Solexia Green, Azuria, Obscure (White Interlayer)
- Stainless steel assembly screws
- Double weather-stripping
- Extruded snap-on glazing beads
- Flange Frame



OUTSWING

OUTSWING E500

MAXIMUM

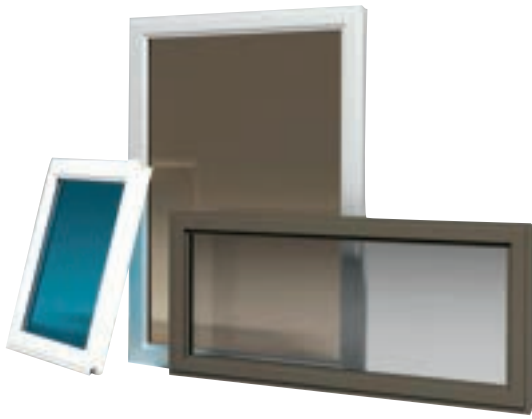
- FRAME DEPTH: 2 3/4"
- WIDTH: 37"
- HEIGHT: 76"
- DESIGN PRESSURE: +70/-75 psf

ADDITIONAL FEATURES

- 5/16" HS/HS
- Stainless steel operator
- Multipoint lock
- Nesting handle
- Miami-Dade County approved: small-missile impact tested

OPTIONS

- 7/16" HS/HS
- Energy efficient LoE coatings
- Equal leg adapter
- Extruded double-applied 1" colonial muntins
- Insulated laminated glass with argon



FIXED

FIXED E550

MAXIMUM
 FRAME DEPTH: 2 3/4"
 WIDTH: 66"
 HEIGHT: 96"
 SIZE: 42" X 96"
 (7/16" OR IG)

LARGE MISSILE
 DESIGN PRESSURE: +70/-75 psf

ADDITIONAL FEATURES

- 5/16" HS/HS

Miami-Dade County approved: small-missile impact tested

OPTIONS

- 7/16" HS/HS
- Energy efficient LoE coatings
- Equal leg adapter
- Extruded double-applied 1" colonial muntins
- Insulated laminated glass with argon



PROJECT OUT

PROJECT OUT E560

MAXIMUM
 FRAME DEPTH: 2 3/4"
 WIDTH: 53 1/8"
 HEIGHT: 37"
 DESIGN PRESSURE: +70/-70 psf

ADDITIONAL FEATURES

- 5/16" HS/HS
- Center-mounted operator with nesting handle
- Dual camlocks

OPTIONS

- Energy efficient LoE coatings
- Equal leg adapter
- Extruded double-applied 1" colonial muntins
- Insulated laminated glass with argon

DOORS

French

Aluminum E600
Aluminum E650

FRAME COLORS



STANDARD FEATURES

- 4" frame depth
- Miami-Dade approved:
large missile impact
- Concealed installation screws
- Available with 3-point, multi-point lock
- Available with single & double
door configuration
- Heavy-gauge aluminum T6 alloy
- Clear, Gray, Bronze, Solexia Green,
Azuria, Obscure (White Interlayer)
- Pre-hung door ready to install
- Extruded aluminum snap-on
glazing beads
- Double weatherstripping

E600

MAXIMUM

WIDTH: ... (X) 39 3/4" (XX) 76" (OXXO) 148"

HEIGHT: 98"

DESIGN PRESSURE: +70/-75 psf

ADDITIONAL FEATURES

- 5/16" HS/HS
- NFRC certified
- Prep for handle & deadbolt
- Outswing only
- 4 3/4" bottom rail

OPTIONS

- 7/16" HS/HS
- Aluminum front applied
2 1/2", 4 1/4" with
1" rear colonial muntins
- Extruded double-applied
1" colonial muntins
- High bottom rail (8 1/4")
- Sidelites
- Energy efficient LoE coatings
- Equal leg adapter
- Insulated laminated glass with argon



E650

MAXIMUM

WIDTH: (X) 39 1/2" (XX) 76 1/4"

HEIGHT: 97 1/2"

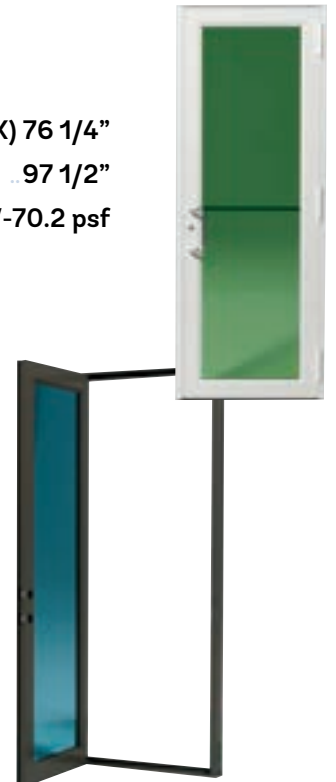
DESIGN PRESSURE: +70/-70.2 psf

ADDITIONAL FEATURES

- 7/16" HS/HS
- Standard tubular push/pull
handles & flush bolts, plus
3 point lock
- 1/2" ADA threshold

OPTIONS

- Aluminum double-applied
1" colonial muntins
- Sidelites
- Panic device (Manual/Electric)
or Push/ Pull
- Energy efficient LoE coatings
- Insulated laminated glass with argon



Sliding

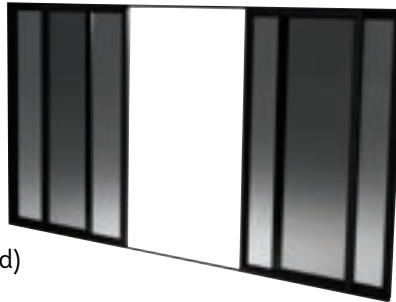
E700

MAXIMUM

WIDTH: 192"
 HEIGHT: 108"
 PANEL SIZE: 48"x108" or 54"x96"
 DESIGN PRESSURE: +70/-80 psf

ADDITIONAL FEATURES

- 7/16" HS/HS
- Miami-Dade approved: small and large missile impact
- Stainless-steel wheels
- Dual-point lock assembly
- 1" sill riser: (not water rated)
 2" sill riser: 47 psf
 2 3/4" sill riser: 70 psf



OPTIONS

- Insulated laminated glass with argon
- Aluminum double-applied 1" colonial muntins
- Energy efficient LoE coatings
- Screens
- E700-3 available in pocket configuration

Aluminum E700
 Aluminum E750



FRAME COLORS

STANDARD FEATURES

- Heavy-gauge aluminum T6 alloy
- Concealed installation screws
- Clear, Gray, Bronze, Solexia Green, Azuria, Obscure (White Interlayer)
- Double weatherstripping

E750

MAXIMUM

WIDTH: 108"
 HEIGHT: 96"
 DESIGN PRESSURE: +70/-130 psf
 with reinforced astragal

ADDITIONAL FEATURES

- 7/16" HS/HS
- Miami-Dade approved: small and large missile
- Florida Product approved: small and large missile
- Stainless steel wheels
- Dual-point locking system
- Reinforced astragal

OPTIONS

- Insulated laminated glass with argon
- Energy efficient LoE coatings
- Aluminum double applied 1" colonial muntins



DOORS

Outswing

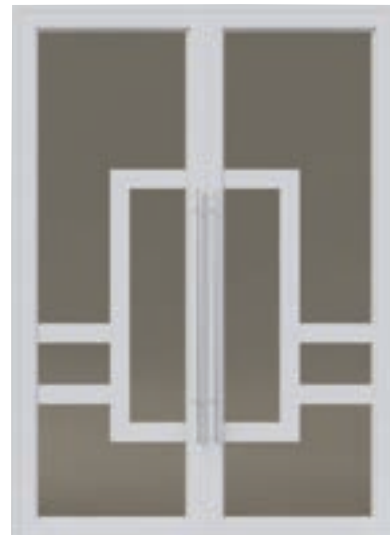
Aluminum E850
Aluminum E950

FRAME COLORS



STANDARD FEATURES

- Heavy-gauge aluminum T6 alloy
- Clear, Gray, Bronze, Solexia Green, Azuria, Obscure (White Interlayer)



E850

MAXIMUM

FRAME DEPTH:5"
WIDTH:..... (X) 45 9/16" (XX) 87 1/2"
HEIGHT:120" w/transom 132"
DESIGN PRESSURE:+80/-80 psf

ADDITIONAL FEATURES

- 9/16" HS/HS
- 3-point lock active leaf/2-point lock inactive leaf
- 1 5/8" Residential bumper threshold
- Florida product approval: Large & small missile impact
- Extruded snap-on glazing bead
- Energy efficient LoE coatings
- Insulated laminated glass with argon
- 2 1/2", 4 1/4" with 1" colonial muntins

OPTIONS

- Integral transom
- 10" bottom rail
- Sidelites
- Intermediate division for endurance & safety



E950

MAXIMUM

FRAME DEPTH: 4"
 WIDTH:..... (X) 39 3/4" (XX) 76 1/8"
 HEIGHT: 108"
 DESIGN PRESSURE: +60/-70 psf

ADDITIONAL FEATURES

- 7/16" HS/HS
- Miami-Dade County approved:
Large & small missile impact
- 4-point lock active leaf/2-point lock inactive leaf
- Residential threshold
- Crest-style handle system

OPTIONS

- 2 1/2", 4 1/4" with 1" colonial muntins
- Energy efficient LoE coatings
- Insulated laminated glass with argon
- Self-mating sidelite

DOORS

DECORATIVE OPTIONS



FOR MORE DECORATIVE DOOR OPTIONS VISIT:

ecowindowssystems.com/decoration.pdf



DOORS

Pivot

Aluminum E1500

FRAME COLORS



STANDARD FEATURES

- Miami Dade Approved:
Large Missile Impact
- Heavy gauge aluminum T6 alloy
- 7/16" HS/HS
- Double Weatherstripping
- 1/2" Threshold
- Outswing/Inswing configuration
- Stainless Steel assembly screws

E1500

MAXIMUM

FRAME DEPTH: 4 9/16"
WIDTH: 60" X 94" w/transom
..... 60" X 110 5/8" w/o transom
HEIGHT: 120" w/transom 132"
DESIGN PRESSURE: +60/-60 psf

OPTIONS

- Insulated laminated glass with argon
- 9" High bottom rail
- Matching Sidelites/Transoms
- True muntins



Garage & Bifold

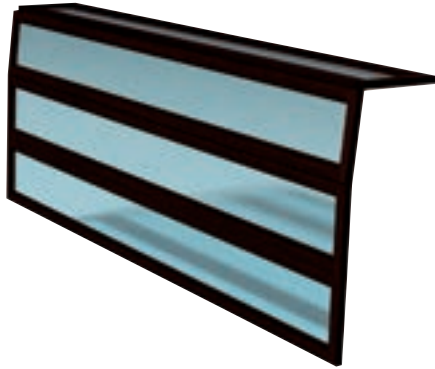
E850-16 (850-12 also available)

MAXIMUM

WIDTH: 192"
 HEIGHT: 144"
 DESIGN PRESSURE: +40/-45 psf

ADDITIONAL FEATURES

- 5/16" HS/HS
- Belt drive door opener
- Support brackets at each track
- Miami-Dade approved-large missile Impact



OPTIONS

- Aluminum slat insert
- Chain drive door opener

Aluminum E850-16
(850-12 also available)

Aluminum E900



FRAME COLORS

STANDARD FEATURES

- Heavy-gauge aluminum T6 alloy
- 2 1/2", 4 1/4" with 1" colonial muntins

E900

MAXIMUM

FRAME DEPTH: 4"
 WIDTH: 390 1/2"
 HEIGHT: 108"
 DESIGN PRESSURE: +60/-60 psf

ADDITIONAL FEATURES

- 7/16" HS/HS
- Florida product approval: large missile impact
- Miami-Dade approved-large & small missile Impact
- Up to 10 panels
- Outswing configuration
- Clear, Gray, Bronze, Solexia Green, Azuria, Obscure (White Interlayer)
- 2-point locking system in each folding door
- 3-point locking system in active door
- 1/2" Commercial saddle (ADA) or 2 1/8" residential bumper threshold

OPTIONS

- Energy efficient LoE coatings
- Insulated laminated glass with argon





8502 NW 80th St., #103; Miami, FL 33166
305-885-5299
EcoWindowSystems.com

FOR MORE DECORATIVE DOOR OPTIONS VISIT:

ecowindowsystems.com/decoration.pdf

